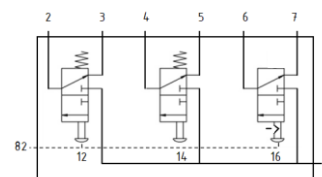


Manually operated 7/6-Valve

SV-M76-SS-VB-S1
Part No.: P2018-002-02



Data Sheet

Property	Value
Valve function	7/6 NC
Operation mode	manual
Dimensions (LxWxH)	123x97x30mm
Flow rate	500nl/min
Working pressure range	0... 10 bar
Valve type	piston
Reset method	Spring (mechanical)
Nominal diameter DN	6 mm
Vent	Not adjustable, protected by silencer
Operation notice	Manually only
Sealing principal	Soft
Installation position	any, preferably horizontal
Control mode	direct
Flow direction	Non-reversible
Overlap	yes
Operation medium	Air, according to ISO 8573-1:2010 [7:4-:4]
Operation medium notice	Lubricated air possible, once used, necessary
corrosion resistance class CRC	3 - enhanced corrosion resistance
Temp. of operation medium	-10 ... 60 °C
Temp. of ambience	-20 ... 120 °C
Operating force (by hand)	10N
Max. operating force	50N
Max. lateral force	5N
Net weight	0,696kg
Fixing method	through-holes for M8
Air supply	G1/4"
Working port 2 (OPEN)	Ø6
Vent 3	G1/8", silencer
Working port 4 (AIR)	Ø6
Vent 5	G1/8", silencer
Working port 6 (CLAMP)	Ø6
Vent 7	G1/8", silencer
Material gaskets	HNBR
Material housing	-01: EN AW-6082 / -02: 1.4305
Material piston	1.4305
Material button	1.4305
Material function indicator pin	EN AW-6082
Material spring	1.4310
Material silencer	brass